

LANDING GEAR SHOCK STRUT ASSEMBLY-HALIBURTON

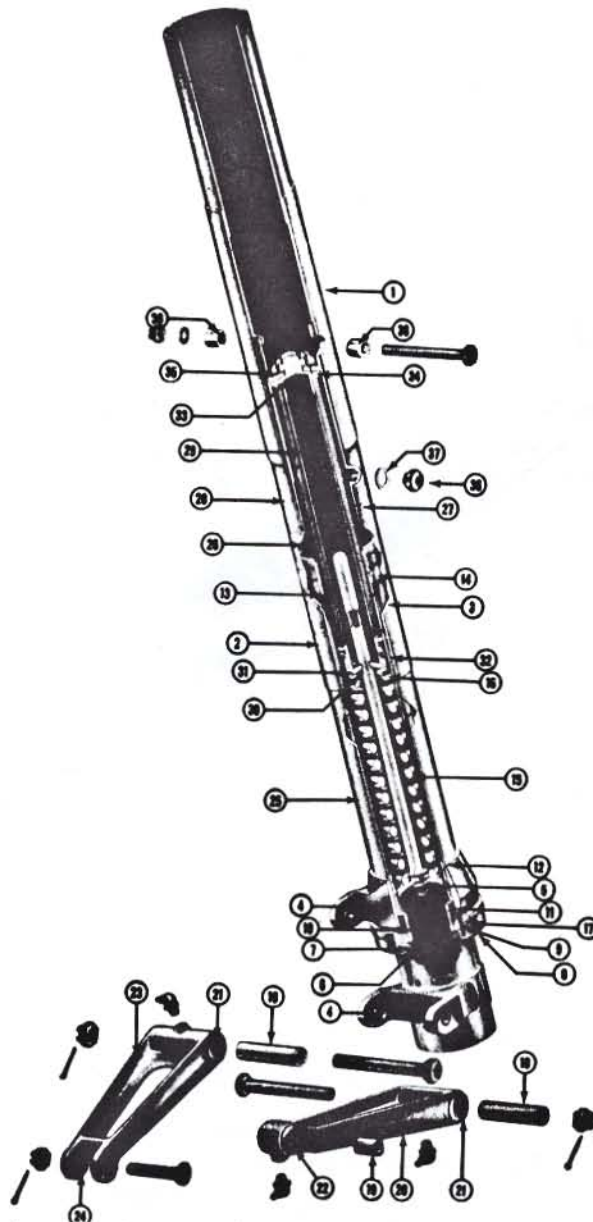


Figure 30 Landing Gear Shock Strut Assy-Haliburton

Index No.	Part No.	Description	Cond.
1, 2 & 3	E75N1-2643	Strut assy-landing gear shock, less scissors, knuckle & axle	Recond.
1	E75N1-2622	Cylinder-shock strut upper	
2	E75N1-2602	Shock absorber assy-scissor type, spring	
3	E75N1-2607	Piston tube assy-outer shock strut piston	
4	AGE75N1-2631	Bushing-flanged yoke	FAA-PMA
5	E75N1-2644	Gasket-shock strut metering pin	N-S
	AN960-1016	Washer-metering pin	F/N
	E75N1-2645	Pin-shock strut metering	N-S
	AN364-1018	Nut-metering pin	F/N
6 & 10	AN6228-37	Packing-V ring, 10 required per airplane	F/N

LANDING GEAR SHOCK STRUT ASSEMBLY-HALIBURTON continued

Figure 30

Index

No.	Part No.	Description	Cond.
6 & 10	AG-107	Haliburton chevron packing kit, 1 required	F/N
7	E75N1-2619	Housing-shock strut ring-wiper	N-S
8	E75N1-2620	Nut-packing, flanged	N-S
9	AN6225-37	Adapter-"V" chevron packing-female	F/N
11	AN6229-37	Adapter-"V" chevron packing-male	F/N
12	E75N1-2621	Bearing-shock strut lower cylinder	N-S
	E75N1-2625	Cylinder-shock strut stop	N-S
13	E75N1-2610	Bearing-shock strut outer piston	N-S
14	E75N1-2611	Pin-flat head (E75N1-2610 bearing)	F/N
15	E75N1-2624	Spring-shock strut compression	N-S
16	E75N1-2623	Washer-shock strut spring seat	N-S
17	E75N1-2634	Ring-lock (E75N1-2620 nut)	N-P
18	E75N1-2633	Spacer-landing gear scissor-1/2" bolt (2 required per scissor assy)	N-P
19	E75N1-2632	Spacer-landing gear scissor-3/8" bolt (1 required per scissor assy)	N-P
20 & 23	E75N1-2626-2629	Scissor assy-landing gear, 2 required	Recond.
21	E75N1-2627	Bushing-scissor torque link, flanged, 4 required	N-P
22	E75N1-2628	Bushing-male scissor torque link, flanged, 2 req.	N-P
24	E75N1-2630	Bushing-female scissor torque link, flanged, 2 req.	N-P
18,19			
21,22			
& 24	AG-108H	Bushing kit-Haliburton l.g. scissor assy, 2 req.	N-P
	Attach hdw.	Landing gear scissor (per scissor assy) 2 ea. AN8-40, 2 ea. AN310-8, 2 ea. AN380-3-3 1 ea. AN6-22, 1 ea. AN310-6, 1 ea. AN380-3-3	F/N
25,26,27	E75N1-2640	Cylinder assy-lower strut tube-inner piston	Recond.
28	E75N1-2603	Cylinder assy-shock strut (outer leg)	Recond.
29	E75N1-2612	Piston assy-shock strut inner orifice	Recond.
	E75N1-2636	Tube assy-inner piston	Recond.
30	E75N1-2617	Insert-piston	Recond.
31	E75N1-2616	Piston-shock strut inner	Recond.
32	E75N1-2615	Screw-inner piston link, 2 required	N-S
33	AN900-10	Gasket-copper-asbestos	F/N
34	AN393-13	Pin-clevis, 2 required	F/N
	AN365-1018	Nut, 1 required	F/N
35	E75N1-2646	Washer, 1 required	N-S
36	905-8	Plug-hex head, filler, 2 required	F/N
37	AN900-8	Gasket-filler plug, 2 required	F/N
38	75-2625	Bushing-bolted type sponson, 2 required	N-S
	AN6-42	Bolt -bolted type sponson, 1 required per leg	F/N
	AN960-616	Washer-bolted type sponson, 1 required per leg	F/N
	AN310-6	Nut-bolted type sponson, 1 required per leg	F/N