

# Dusters & Sprayers Supply, Inc.

P. O. Box 766 – Chickasha, OK 73023-0766  
UPS Delivery – 2163 Highway 81 – Chickasha, OK 73018-8302 – Across from Municipal Airport  
Phone: (405) 224-1201  
Fax: (405) 224-0270

Website: [www.dustersandsprayers.com](http://www.dustersandsprayers.com)  
E-mail: [info@dustersandsprayers.com](mailto:info@dustersandsprayers.com)

VISA, MASTERCARD & DISCOVER ACCEPTED

## COUNTERWEIGHT PROPELLERS

*All Prices*  
*Subject To Change*  
*Without Notice*

## PARTS CATALOG HAMILTON STANDARD

2012 - 2013

Revised August 2012



*America's Most Complete Air-Ag Supply House*



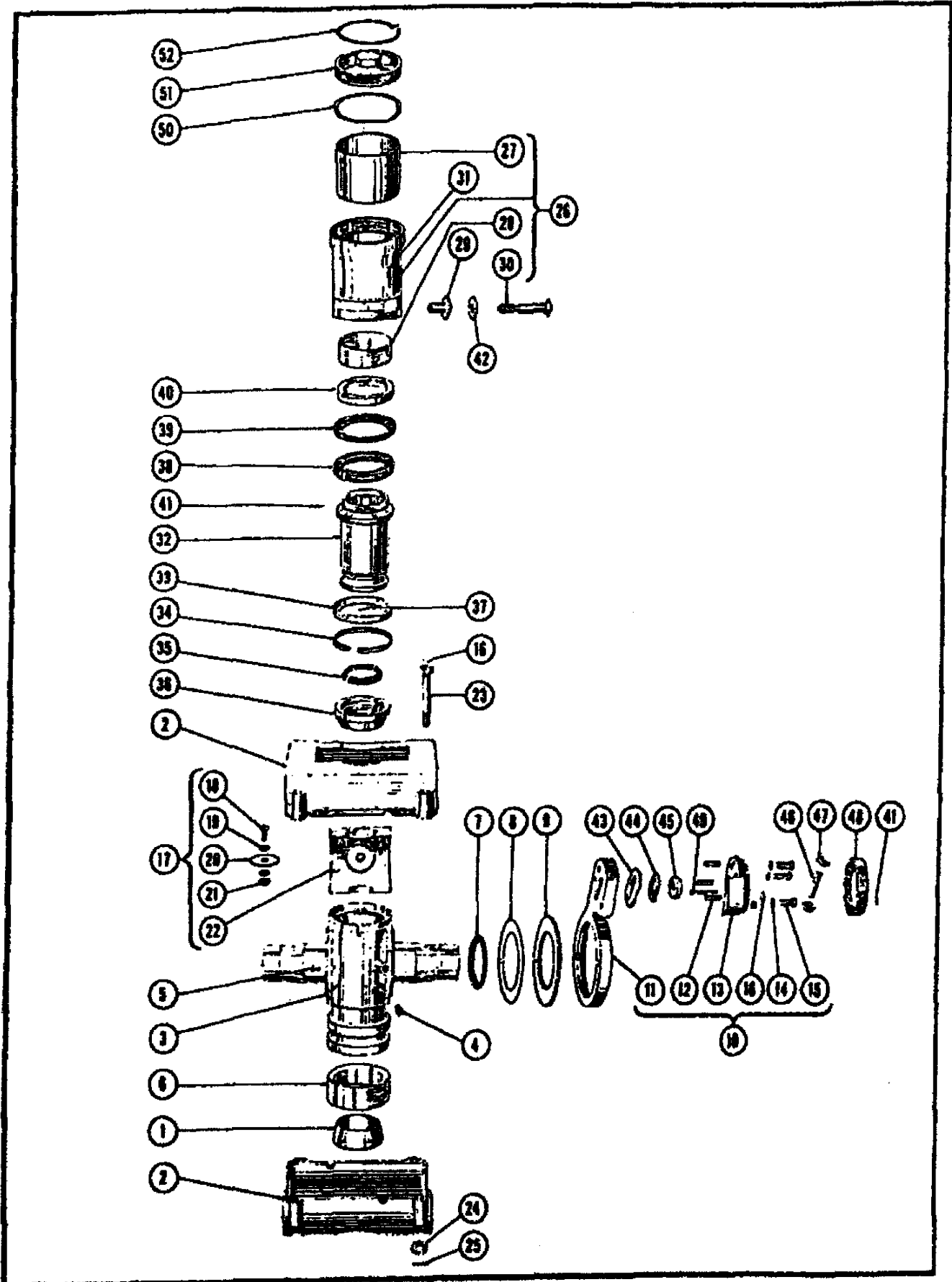


Figure 11 -- Hub Assembly Model 2B20

**HAMILTON STANDARD PROPELLERS**

**Group Assembly Parts List**

Figure & Index Number	Part Number	Nomenclature 1234	Units Per Assy.	Figure & Index Number	Part Number	Nomenclature 1234	Units Per Assy.
11	2B20-337	Hub Assembly	1	11-27	51136	Liner – Cylinder (Steel)	1
11-1	AN5008-20	Cone – Rear	1	11-28	51573	Liner – Cylinder (Phenolic)	1
11-2	51135	Barrel Assembly	1	11-29	59346	Bushing – Cwt. Bearing Shaft	2
11-3	55210	Spider	1	11-30	50356	Shaft – Counterweight Bearing	2
11-4	51259	Fitting – Grease	2	11-31	AN380-3-5	Pin	2
11-5	50296	Dowel – Shim Plate	2	11-32	50121	Piston	1
	+50296-6	Dowel – Shim Plate – (.006” o.s.)	+	11-33	50122	Ring – Piston	1
11-6	50119	Ring – Spider (Phenolic)	1	11-34	AN5009-20	Ring – Snap	1
11-7	51472	Retainer Assembly – Grease	2	11-35	50115	Washer – Front Cone Packing	1
11-8	52988	Shim – Spider – (.008” to .020” thick in .001” increments)	2	11-36	50124	Cone – Front	1
11-9	51465	Plate – Shim	2	11-37	AN380-3-2	Pin – Cotter	2
11-10	52375	Bracket Assy. – Counterweight	2	11-38	50287	Gasket – Piston (Inboard)	1
11-11	52282	Bracket – Counterweight	2	11-39	50116	Gasket – Piston (Outboard)	1
11-12	S8488	Dowel – Counterweight	6	11-40	50698	Nut – Piston Gasket	1
11-13	51783	Counterweight	2	11-41	AN380-2-2	Pin – Cotter	3
11-14	50341	Washer – Cwt. Screw Lock	6	11-42	59347	Washer – Thrust	2
11-15	50093	Screw – Counterweight	6		+59347-15	Washer – Thrust (.015” oversize)	+
11-16	51171	Plug – Welch	6		+59347-30	Washer – Thrust (.030” oversize)	+
11-17	56830	Support Assembly – Barrel	2	11-43	50020	Race – Cwt. Bearing (Inner)	2
11-18	AN526-428-10	Screw	2	11-44	51223	Retainer Assy. – Cwt. Bearing	2
11-19	AN960-416L	Washer	4	11-45	50021	Race – Cwt. Bearing (Outer)	2
11-20	56831	Washer – Balancing (Lead)	Ar	11-46	50357	Screw Assy. – Cwt. Adjusting	2
11-21	AN364-428	Nut	2	11-47	S8474	Nut – Cwt. Adjusting Screw	4
11-22	51464	Support – Barrel (Phenolic)	2	11-48	51030	Cap – Counterweight	2
11-23	50134	Bolt – Barrel	4	11-49	AN392-51	Pin – Clevis	2
11-24	50135	Nut – Barrel Bolt	4	11-50	50117	Gasket – Cylinder Head	1
11-25	AN380-3-3	Pin – Cotter	4	11-51	50123	Head – Cylinder	1
11-26	61245	Cylinder Assembly	1	11-52	50118	Ring – Cylinder Head Lock	1

2B-20-6135-15 Propeller Assy., O/H/Certified – POR  
 2B-20-6135-9 Propeller Assy., O/H/Certified – POR  
 Plus crating charge per prop

**2B-20 HUB PARTS**  
All Prices Net

Figure Index No.	Part Number	Condition Serviceable	Condition New
11	2b-20 Hub Assy.	769.45	POR
11-1	AN5008-20		Reconditioned - 165.00
11-2	51135	109.45	206.25
11-3	55210	O/H/C – 671.00	1010.35
11-4	51259		6.45
11-5	50296		10.95
	50296+6		10.95
11-6	50119		42.85
11-7	51472		29.15
11-8	52988-8 thru – 20		10.45
11-9	51465	25.95	37.95
11-10	52375	131.95	182.05
11-11	52282	130.00	208.45
11-12	S-8488		10.90

**Continued on next page**

**2B-20 HUB PARTS continued****All Prices Net**

<b>Figure Index No.</b>	<b>Part Number</b>	<b>Condition Serviceable</b>	<b>Condition New</b>
11-13	51783	71.50	132.00
11-14	50341		7.60
11-15	50093		8.75
11-16	51171		1.15
11-17	56830	119.35	214.50
11-18	AN526-428-10		0.85
11-19	AN960-416L		0.10
11-20	56831		2.35
11-21	AN364-428		0.75
11-22	51464		220.00
11-23	50134	9.80	15.35
11-24	50135	2.15	4.35
11-25	AN380-3-3		0.10
11-26	61245		335.50
11-26	51137 (use Part No. 61245)		335.50
11-27	51136		148.50
11-28	51573		24.15
11-29	59346		40.65
11-30	50356		121.55
11-31	AN380-3-5		0.10
11-32	50121	68.40	102.85
11-33	50122	21.80	30.25
11-34	AN5009-20		Reconditioned – 36.60
11-35	50115		37.50
11-36	50124	90.75	112.50
11-37	AN380-3-2		0.10
11-38	50287		19.25
11-39	50116		19.25
11-40	50698	15.95	20.35
11-41	AN380-2-2		0.10
11-42	59347		26.40
	59347+15		26.40
	59347+30		26.40
11-43	50020	83.05	116.05
11-44	51223	96.80	151.25
11-45	50021	75.35	109.45
11-46	50357	8.80	13.75
11-47	S-8474 (Steel – 11 oz.)		19.25
11-48	S-8475 (Aluminum – 4 oz.)	54.95	76.95
11-48	51030 (Steel – 6 oz.)		60.50
11-48	50284	24.95	51.45
11-49	AN392-51		3.75
11-50	50117		37.50
11-51	50123	38.45	52.75
11-52	50118	5.85	10.45

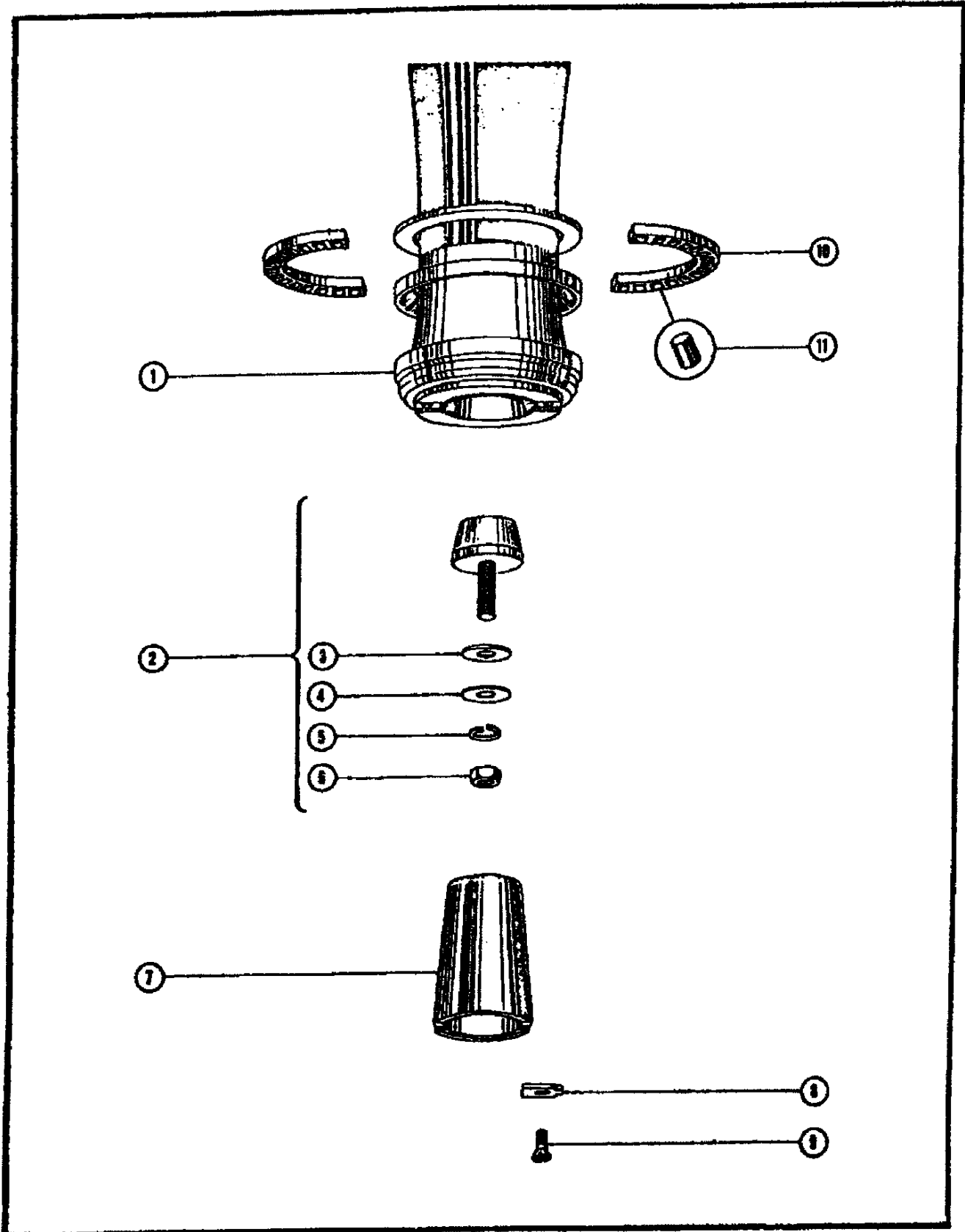
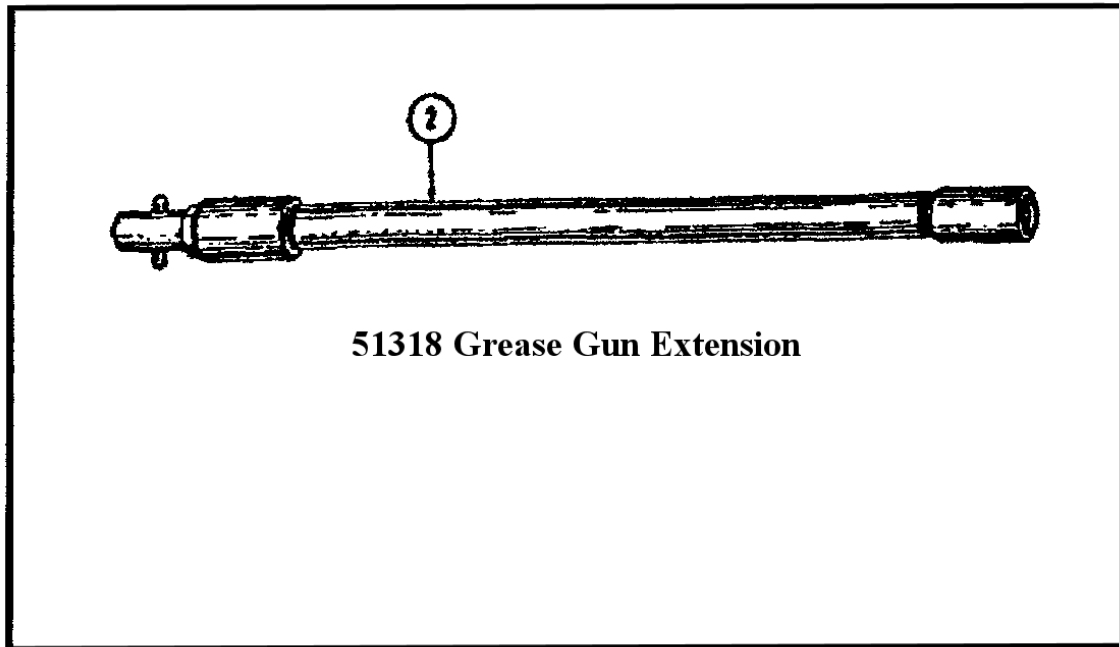


Figure 47 -- "B" Shank Blade Design



51318 Grease Gun Extension

Figure 52 - Service Tool

SERVICE TOOLS CHART							
FIGURE & INDEX NUMBER	NAME OF TOOL	PROPELLER MODELS					
		2B20	2D30	12D40	2E40	3D40	3E50
52-2	Grease Gun Extension	51318	51318	51318	51318	51318	51318

2B-20 6135-9 & -15 PROP BLADES & COMPONENT PARTS

All Prices Net

Figure Index No.	Part Number	Nomenclature	Overhauled Certified	Condition New
41-1	6135A-9	Blade Assy.	POR	
	6135A-15	Blade Assy.	POR	
47-2	55903	Plug assy. – blade balancing		59.30
47-3	945-8	Washer		1.20
47-4	51376	Washer – blade balancing (thin)		1.55
47-5	AN935-816	Washer – lock		0.20
476-	AN315-8R	Nut		1.55
47-7	51546	Bushing – blade		239.00
47-8	52539	Blade key – degree set 17.5° or 28.5°		66.55
	50265	Blade key – degree set 18° or 28°		45.40
	50264	Blade key – degree set 19° or 27°		48.30
	50263	Blade key – degree set 20° or 26°		45.40
	50262	Blade key – degree set 21° or 25°		45.40
	50261	Blade key – degree set 22° or 24°		52.65
	52425	Blade key – degree set 22.5° or 23.5°		48.30
	50140	Blade key – degree set 23°		45.40
47-9	51187	Screw – blade bushing		8.10
47-10	52602	Retainer assy. – blade thrust bearing, per blade		151.25
47-11	52602-2	Roller – blade thrust bearing		3.55

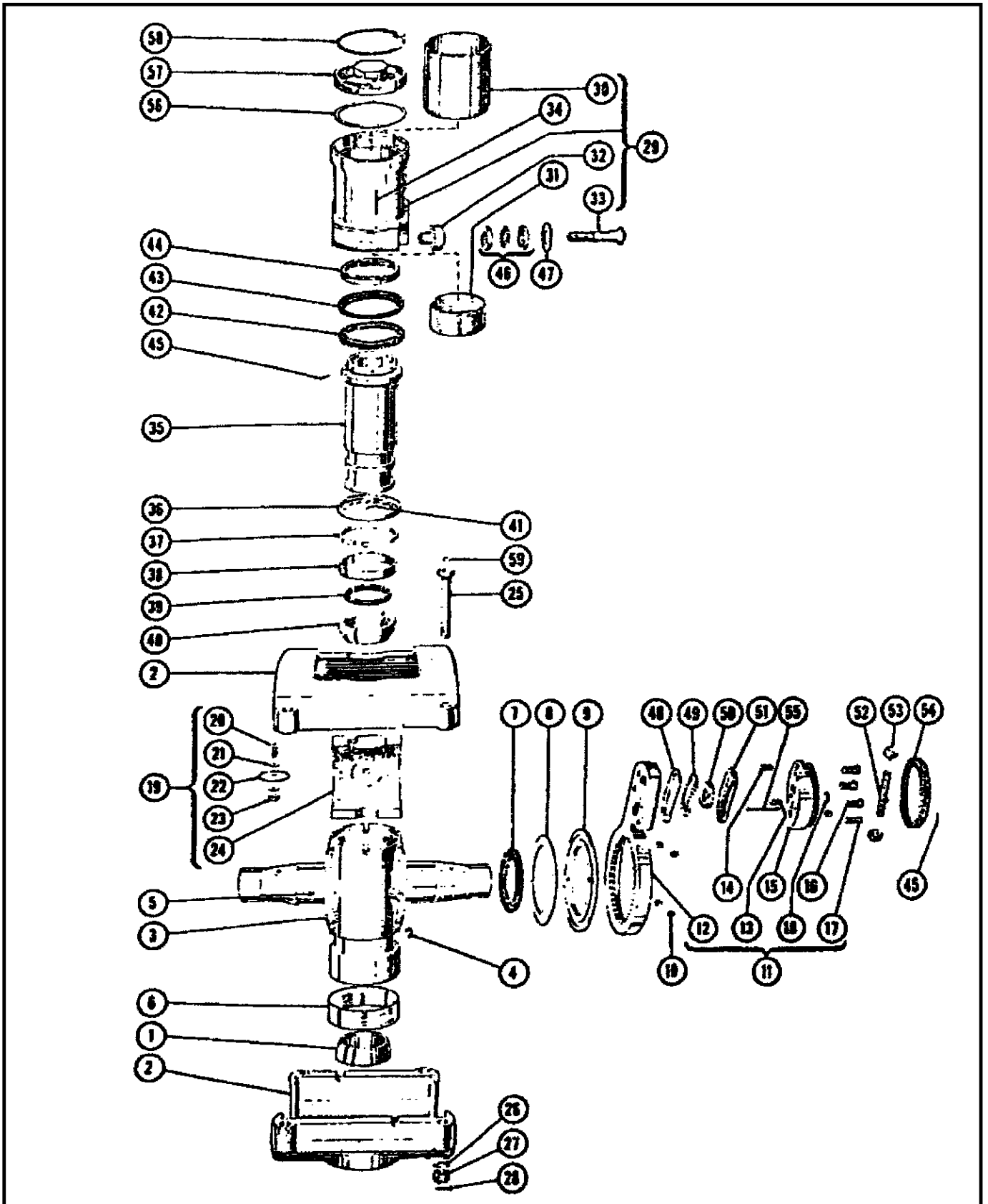


Figure 18 – Hub Assembly Model 2D30



**HAMILTON STANDARD PROPELLERS**

**Group Assembly Parts List**

Figure & Index Number	Part Number	Nomenclature os=oversize	Units Per Assy.
18	2D30-237	Hub Assembly	1
18-1	AN5008-30	Cone – Rear	1
18-2	S8462	Barrel Assembly	1
18-3	51459	Spider	1
18-4	51259	Fitting – Grease	2
18-5	50296	Dowel – Shim Plate	2
	+50296-6	Dowel – Shim Plate (.006” os)	+
18-6	S8482	Ring – Spider (Phenolic)	1
18-7	51368	Retainer Assembly – Grease	2
18-8	52987	Shim – Spider (.005” to .023” thick in .001 increments)	2
18-9	51399	Plate – Shim	2
18-10	S8441	Pin – Blade Bushing Index	8
	+S8441-1	Pin – Blade Bush. Index (.0005” os)	+
	+S8441-2	Pin – Blade Bush. Index (.001” os)	+
	+S8441-3	Pin – Blade Bush. Index (.0015” os)	+
	+S8441-4	Pin – Blade Bush. Index (.002” os)	+
	+S8441-5	Pin – Blade Bush. Index (.0025” os)	+
	+S8441-6	Pin – Blade Bush. Index (.003” os)	+
	+S8441-7	Pin – Blade Bush. Index (.0035” os)	+
	+S8441-8	Pin – Blade Bush. Index (.004” os)	+
	+S8441-9	Pin – Blade Bush. Index (.0045” os)	+
	+S8441-10	Pin – Blade Bush. Index (.005” os)	+
	+S8441-11	Pin – Blade Bush. Index (.0055” os)	+
	+S8441-12	Pin – Blade Bush. Index (.006” os)	+
	+S8441-13	Pin – Blade Bush. Index (.0065” os)	+
	+S8441-14	Pin – Blade Bush. Index (.007” os)	+
	+S8441-15	Pin – Blade Bush. Index (.0075” os)	+
	+S8441-16	Pin – Blade Bush. Index (.008” os)	+
	+S8441-17	Pin – Blade Bush. Index (.0085” os)	+
	+S8441-18	Pin – Blade Bush. Index (.009” os)	+
	+S8441-19	Pin – Blade Bush. Index (.0095” os)	+
	+S8441-20	Pin – Blade Bush. Index (.010” os)	+
18-11	51455	Bracket Assy. – Counterweight	2
18-12	51430	Bracket – Counterweight	2
18-13	50306	Dowel – Counterweight (small)	2
18-14	50307	Dowel – Counterweight (large)	6
18-15	51431	Counterweight	2
18-16	50091	Screw – Counterweight (small)	2
18-17	50092	Screw – Counterweight (large)	6
18-18	53597	Plug – Welch	2
18-19	62034	Support Assembly – Barrel	2
18-20	AN526-428-10	Screw	2

Figure & Index Number	Part Number	Nomenclature os=oversize	Units Per Assy.
18-21	AN960-416L	Washer	4
18-22	56831	Washer – Balancing (Lead)	ar
18-23	AN364-428	Nut	2
18-24	51463	Support – Barrel (Phenolic)	2
18-25	50083	Bolt – Barrel	4
18-26	AN960-816	Washer	24
18-27	50095	Nut – Barrel Bolt	4
18-28	AN380-3-3	Pin – Cotter	4
18-29	51539	Cylinder Assembly	1
18-30	51035	Liner – Cylinder (Steel)	1
18-31	51572	Liner – Cylinder (Phenolic)	1
18-32	51124	Bushing – Cwt. Bearing Shaft	2
18-33	53546	Shaft – Counterweight Bearing	2
18-34	AN380-3-6	Pin – Cotter	2
18-35	50416	Piston	1
18-36	50101	Ring – Piston Lock	1
18-37	AN5009-30	Ring – Snap	1
18-38	S8467	Spacer – Front Cone	1
18-39	S8480	Washer – Front Cone Packing	1
18-40	S8478	Cone – Front	1
18-41	AN380-3-2	Pin – Cotter	2
18-42	50285	Gasket – Piston (Inboard)	1
18-43	S8464	Gasket – Piston (Outboard)	1
18-44	50697	Nut – Piston Gasket	1
18-45	AN380-2-2	Pin – Cotter	3
18-46	52771	Bearing Assy. – Cwt. Thrust	2
18-47	51129	Washer – Thrust	2
	+51129-15	Washer – Thrust (.015” os)	+
	+51129-30	Washer – Thrust (.030” os)	+
18-48	53213	Race – Cwt. Bearing (Inner)	2
18-49	53214	Retainer Assy. – Cwt. Bearing	2
18-50	53216	Race – Cwt. Bearing (Outer)	2
18-51	53599	Spacer – Cwt. Bearing Retainer	2
18-52	50359	Screw Assy. – Cwt. Adjusting	2
18-53	S8474	Nut – Cwt. Adjusting Screw	6
18-54	S8501	Cap – Counterweight	2
18-55	AN392-45	Pin – Clevis	2
18-56	50003	Gasket – Cylinder Head	1
18-57	50156	Head Cylinder	1
18-58	50004	Ring – Cylinder Head Lock	1
18-59	51171	Plug – Welch	4
	51218	Wire - Safety	ar

**2B-30 HUB PARTS**  
**All Prices Net**

<b>Figure Index No.</b>	<b>Part Number</b>	<b>Condition Serviceable</b>	<b>Condition New</b>
18	2D-30 Hub assy., O/H/C		POR
18-1	AN5008-30	47.70	96.20
18-2	S-8462	O/H/C 251.10	400.85
18-3	51459	139.15	275.30
18-4	51259		6.45
18-5	50296		10.95
	50296+6		10.95
18-6	S-8482		39.50
18-7	51368		47.80
18-8	52987-5 thru -23		9.60
18-9	51399	105.30	163.35
18-10	S-8441		10.30
	S-8441-1 thru -20		10.85
18-11	51455 - 15°	266.20	350.65
	51163 - 10°	139.15	284.35
18-12	51430 - 15°	266.20	350.65
	50390 - 10°	84.65	154.30
18-13	50306		9.65
18-14	50307		9.65
18-15	51431 - 15°	60.25	88.25
	50289 - 10°	50.15	81.70
18-16	50091		11.80
18-17	50092		11.80
18-18	53597		1.45
18-19	62034	86.45	151.25
18-20	AN526-428-10		0.85
18-21	AN960-416L		0.10
18-22	56831		2.35
18-23	AN364-428		0.75
18-24	51463	84.10	151.25
18-25	50083	11.50	23.60
18-26	AN960-816		0.30
18-27	50095	2.00	4.70
18-28	AN380-3-3		0.10
18-29	51539	(removed from O/H props) 272.25	465.85
18-30	51035		114.95
18-31	51572		33.30
18-32	51124		84.45
18-33	53546	42.35	84.70
18-34	AN380-3-6		0.15
18-35	50416	49.50	84.45
18-36	50101	9.35	22.95
18-37	AN5009-30	11.85	22.90
18-38	S-8467	6.50	10.75

Continued on next page

**2B-30 HUB PARTS continued****All Prices Net**

<b>Figure Index No.</b>	<b>Part Number</b>	<b>Condition Serviceable</b>	<b>Condition New</b>
18-39	S-8480		30.00
18-40	S-8478	30.15	59.90
18-41	AN380-3-2		0.10
18-42	50285		19.05
18-43	S-8464		15.60
18-44	50697	10.65	20.30
18-45	AN380-2-2		0.10
18-46	52771	85.00	230.00
18-47	51129, +5, +10, +20, +25, +30		15.35
18-48	53213	108.90	217.20
18-49	53214		120.45
18-50	53216	120.45	192.40
18-51	53599	8.80	20.30
18-52	50359	11.80	20.00
18-53	S-8474		19.25
18-54	S-8501	40.55	60.40
	50290 - 10°	24.45	47.80
	S-8511	44.20	66.55
18-55	AN392-45		2.40
18-56	50003		30.00
18-57	51056	29.95	41.05
18-58	50004	4.75	6.70
18-59	51171		1.15

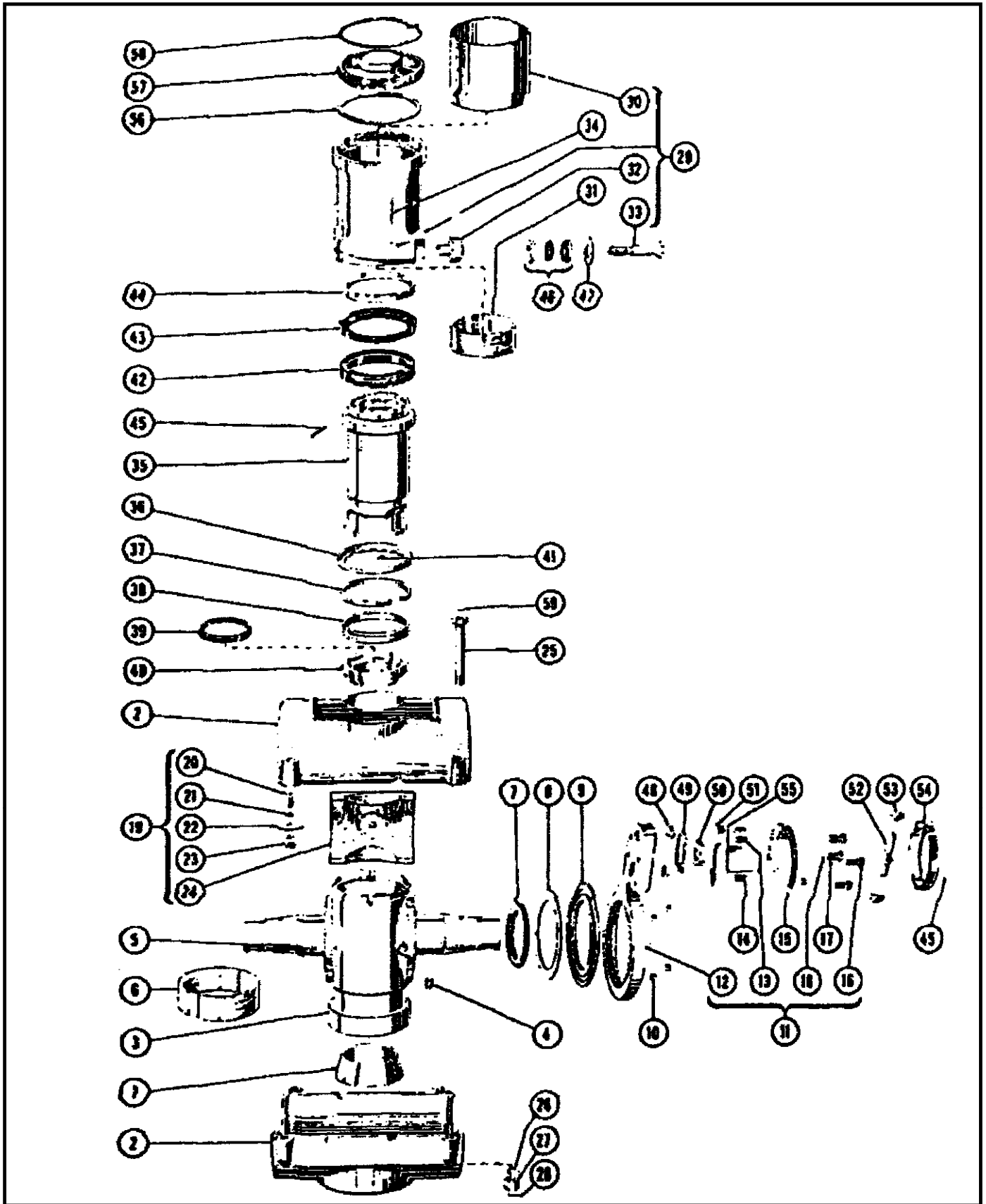


Figure 26 – Hub Assembly Model 12D40-217

**HAMILTON STANDARD PROPELLERS**

**Group Assembly Parts List**

Figure & Index Number	Part Number	Nomenclature os=oversize	Units Per Assy.
26	12D-40-217	Hub Assembly	1
26-1	AN5008-40	Cone – Rear	1
26-2	50384	Barrel Assembly	1
26-3	51458	Spider	1
24-4	51259	Fitting – Grease	2
26-5	50296	Dowel – Shim Plate	2
	+50296-6	Dowel – Shim Plate (.006” os)	+
26-6	S8493	Ring – Spider (Phenolic)	1
26-7	51368	Retainer Assembly – Grease	2
26-8	52987	Shim – Spider (.005” to .023” thick in .001” increments)	2
26-9	51399	Plate – Shim	2
26-10	S8441	Pin – Blade Bushing Index	8
	+S8441-1	Pin – Blade Bush. Index (.0005” os)	+
	+S8441-2	Pin – Blade Bush. Index (.001” os)	+
	+S8441-3	Pin – Blade Bush. Index (.0015” os)	+
	+S8441-4	Pin – Blade Bush. Index (.002” os)	+
	+S8441-5	Pin – Blade Bush. Index (.0025” os)	+
	+S8441-6	Pin – Blade Bush. Index (.003” os)	+
	+S8441-7	Pin – Blade Bush. Index (.0035” os)	+
	+S8441-8	Pin – Blade Bush. Index (.004” os)	+
	+S8441-9	Pin – Blade Bush. Index (.0045” os)	+
	+S8441-10	Pin – Blade Bush. Index (.005” os)	+
	+S8441-11	Pin – Blade Bush. Index (.0055” os)	+
	+S8441-12	Pin – Blade Bush. Index (.006” os)	+
	+S8441-13	Pin – Blade Bush. Index (.0065” os)	+
	+S8441-14	Pin – Blade Bush. Index (.007” os)	+
	+S8441-15	Pin – Blade Bush. Index (.0075” os)	+
	+S8441-16	Pin – Blade Bush. Index (.008” os)	+
	+S8441-17	Pin – Blade Bush. Index (.0085” os)	+
	+S8441-18	Pin – Blade Bush. Index (.009” os)	+
	+S8441-19	Pin – Blade Bush. Index (.0095” os)	+
	+S8441-20	Pin – Blade Bush. Index (.010” os)	+
26-11	51379	Bracket Assy. – Counterweight	2
26-12	51390	Bracket – Counterweight	2
26-13	50306	Dowel – Cwt. (small)	4
26-14	50307	Dowel – Cwt. (large)	4
26-15	50396	Counterweight	2
26-16	50091	Screw – Counterweight (small)	4
26-17	50092	Screw – Counterweight (large)	4
26-18	53597	Plug – Welch	2
26-19	62152	Support Assembly – Barrel	2
26-20	AN526-428-10	Screw	2

Figure & Index Number	Part Number	Nomenclature os=oversize	Units Per Assy.
26-21	AN960-416L	Washer	4
26-22	56831	Washer – Balancing (Lead)	ar
26-23	AN364-428	Nut	2
26-24	51462	Support – Barrel (Phenolic)	2
26-25	50083	Bolt – Barrel	4
26-26	AN960-816	Washer	24
26-27	50095	Nut – Barrel Bolt	4
26-28	AN380-3-3	Pin – Cotter	4
26-29	51433	Cylinder Assembly	1
26-30	51037	Liner – Cylinder (Steel)	1
26-31	51571	Liner – Cylinder (Phenolic)	1
26-32	51124	Bushing – Cwt. Bearing Shaft	2
26-33	53546	Shaft – Counterweight Bearing	2
26-34	AN380-3-6	Pin – Cotter	2
26-35	50386	Piston	1
26-36	50108	Ring – Piston Lock	1
26-37	AN5009-40	Ring – Snap	1
26-38	50050	Spacer – Front Cone	1
26-39	S8491	Washer – Front Cone Packing	1
26-40	S8492	Cone – Front	1
26-41	AN380-3-2	Pin – Cotter	2
26-42	50286	Gasket – Piston (Inboard)	1
26-43	S8498	Gasket – Piston (Outboard)	1
26-44	50696	Nut – Piston Gasket	1
26-45	AN380-2-2	Pin – Cotter	3
26-46	52771	Bearing Assy. – Cwt. Thrust	2
26-47	51129	Washer – Thrust	2
	+51129-15	Washer – Thrust (.015” os)	+
	+51129-30	Washer – Thrust (.030” os)	+
26-48	53213	Race – Cwt. Bearing (Inner)	2
26-49	53214	Retainer Assy. – Cwt. Bearing	2
26-50	53216	Race – Cwt. Bearing (Outer)	2
26-51	53599	Spacer – Cwt. Bearing Retainer	2
26-52	50359	Screw Assy. – Cwt. Adjusting	2
26-53	S8474	Nut – Cwt. Adjusting Screw	6
26-54	S8501	Cap – Counterweight	2
26-55	AN392-45	Pin – Clevis	2
26-56	50010	Gasket – Cylinder Head	1
26-57	50220	Head Cylinder	1
26-58	50009	Ring – Cylinder Head Lock	1
26-59	51171	Plug – Welch	4
	51218	Wire - Safety	ar

**12D-40 HUB PARTS**  
**All Prices Net**

<b>Figure Index No.</b>	<b>Part Number</b>	<b>Condition Serviceable</b>	<b>Condition New</b>
26	12D-40 Hub Assembly, O/H/C	POR	
26-1	AN5008-40		84.10
26-2	50384 O/H/C	POR	POR
26-3	51458 O/H/C	POR	POR
26-4	51259		6.45
26-5	50296		10.85
	50296+6		9.60
26-6	S-8493		114.95
26-7	51368		47.80
26-8	52987-5 thru -23		9.60
26-9	51399	105.30	163.35
26-10	S-8441		10.30
	S-8441-1 thru -20		10.85
26-11	51456 15°		439.70
	51379 10°		318.95
26-12	50390 10°	84.65	154.30
	51430 15°	266.20	350.65
26-13	50306		9.65
24-14	50307		9.65
26-15	50396 10°	81.70	153.70
	51432 15°	78.65	102.85
26-16	50091		11.80
26-17	50092		11.80
26-18	53597		1.45
26-19	62152		180.90
26-20	AN526-428-10		0.85
26-21	AN960-416L		0.10
26-22	56821		2.35
26-23	AN364-428		0.75
26-24	51462		175.45
26-25	50082	11.50	23.60
26-26	AN960-816		0.30
26-27	50095	2.00	4.70
26-28	AN380-3-3		0.10
26-29	51433		POR
26-30	51037		163.35
26-31	51571		74.45
26-32	51124		84.45
26-33	53546	46.60	84.70
26-34	AN380-3-6		0.15
26-35	50386 O/H/C	235.95	356.95
26-36	50108		26.30
26-37	AN5009-40	13.05	22.90
26-38	50050		12.00

Continued on next page

**12D-40 HUB PARTS continued****All Prices Net**

<b>Figure Index No.</b>	<b>Part Number</b>	<b>Condition Serviceable</b>	<b>Condition New</b>
26-39	S-8491		30.00
26-40	S-8492		76.85
26-41	AN380-3-2		0.10
26-42	50286		20.50
26-43	S-8498		21.70
26-44	50696		20.00
26-45	AN380-2-2		0.10
26-46	52771	85.00	230.00
26-47	51129		15.35
	51129+5, +10, +15, +20, +25, +30		15.35
26-48	53213	108.90	217.20
26-49	53214		120.45
26-50	53216	120.45	192.40
26-51	53599	8.80	20.30
26-52	50359	12.00	20.20
26-53	S-8474		19.25
26-54	S-8501	40.55	60.40
	S-8511	44.20	66.55
26-55	AN392-45		2.40
26-56	50010		39.50
26-57	50220	44.20	66.55
26-58	50009		9.10
26-59	51171		1.15

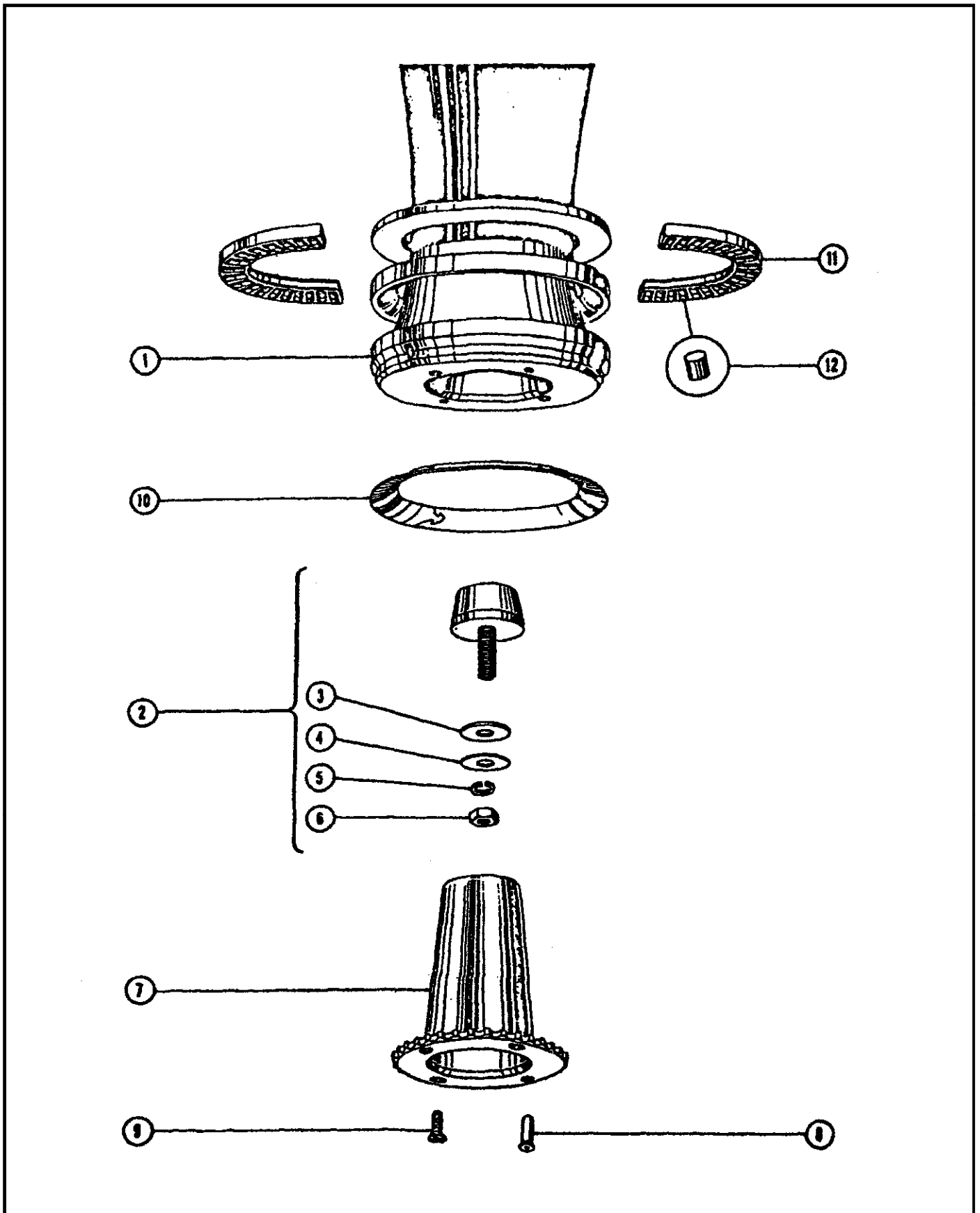


Figure 49 - "D" Shank Blade Design



**2D-30 & 12D-40 PROPELLER BLADES & PARTS**

**All Prices Net**

<b>Figure &amp; Index No.</b>	<b>Part No.</b>	<b>Nomenclature</b>	<b>Condition Serviceable</b>	<b>Condition New</b>
49-1	AG6101-A12	Blade assy. – factory new		POR
49-1	6101A-12	Blade assy. – O/H/C	POR	
	6101A-13	Blade assy. – O/H/C	POR	
	6101A-14	Blade assy. – O/H/C	POR	
49-2	55815	Plug assy. – blade balancing		40.55
49-3	945-8	Washer		1.20
49-4	51376	Washer – blade balancing (thin)		2.35
49-5	AN935-816	Washer		0.25
49-6	AN315-8R	Nut		1.55
49-7	51313	Bushing – blade	235.95	326.10
49-8	S-8112	Pin – blade bushing drive		8.90
	S-8112+5	Pin – blade bushing drive		8.90
	S-8112+10	Pin – blade bushing drive		8.90
	S-8112+15	Pin – blade bushing drive		8.90
	S-8112+20	Pin – blade bushing drive		8.90
	S-8112+25	Pin – blade bushing drive		8.90
	S-8112+30	Pin – blade bushing drive		8.90
49-9	51187	Screw – blade bushing		9.65
49-10	56371-20C	Ring – blade chafing		54.45
	56371-20F	Ring – blade chafing		54.45
	56371-0C	Ring – blade chafing, - .020		36.30
	56371-0F	Ring – blade chafing, - .020 (fiberglass)		74.45
	56371-5C	Ring – blade chafing, - .015		30.25
	56371-5F	Ring – blade chafing, - .015 (fiberglass)		107.70
	56371-10C	Ring – blade chafing, - .010		47.80
	56371-10F	Ring – blade chafing, - .010 (fiberglass)		107.70
	56371-15C	Ring – blade chafing, - .005		47.80
	56371-15F	Ring – blade chafing, - .005 (fiberglass)		107.75
	56371-25C	Ring – blade chafing, + .005		47.80
	56371-25F	Ring – blade chafing, + .005 (fiberglass)		109.75
	56371-30C	Ring – blade chafing, + .010		47.80
	56371-30F	Ring – blade chafing, + .010 (fiberglass)		107.70
	56371-35C	Ring – blade chafing, + .015		52.65
	56371-35F	Ring – blade chafing, + .015 (fiberglass)		107.70
	56371-40C	Ring – blade chafing, + .020		151.25
	56371-40F	Ring – blade chafing, + .020 (fiberglass)		107.70
49-11	52595	Retainer assy. – blade thrust bearing, per blade		272.25
	52595-2	Roller – blade thrust bearing		5.00
	70241	Retainer assy. – blade thrust bearing, 1 pc. roller, O/H/C		POR
	70241	Retainer assy. – blade thrust bearing, 1 pc. roller, N-S		306.75
	70096	Roller – blade thrust bearing		4.35

**PROPELLERS – HAMILTON STANDARD, All Prices Net**

<b>Part No.</b>	<b>Nomenclature</b>	<b>Price</b>
2D-30-6101A12	Propeller Assy., new blades, overhauled/certified hub	POR
12D-40-6101A12	Propeller Assy., new blades, overhauled/certified hub	POR
2D-30-6101A12	Propeller Assy., overhauled/certified	POR
2D-30-6101A13	Propeller Assy., overhauled/certified	POR
2D-30-6101A14	Propeller Assy., overhauled/certified	POR
12D-40-6101A12	Propeller Assy., overhauled/certified	POR
EAC2D-30-AG100-2	Propeller Assy., overhauled/certified hub w/new blades	POR
EAC2D-30-AG100-4S	Propeller Assy., overhauled/certified hub w/new blades	POR
EAC12D-40-AG100-2	Propeller Assy., overhauled/certified hub w/new blades	POR
EAC12D-40-AC100-4S	Propeller Assy., overhauled/certified hub w/new blades	POR
AG-100-2	Blade, factory new	POR
AG-100-4S	Blade, factory new – square tips	POR
EAC22D30-AG200-2	Propeller Assy. with new blades	POR
EAC22D30-AG200-4S	Propeller Assy. with new blades	POR
EAC22D40-AG200-2	Propeller Assy. with new blades	POR
EAC22D40-AG200-4S	Propeller Assy. with new blades	POR
AG-200-2	Blade, factory new	POR
AG-200-4S	Blade, factory new	POR
AG-101-A12	Blade Assy., factory new	POR

**PROPELLER SEAL KITS, All Prices Net**

<b>Part No.</b>	<b>Nomenclature</b>	<b>Price</b>
2B-20	Propeller seal kit (leather seals)	50.85
2D-30	Propeller seal kit (leather seals)	50.85
12D-40	Propeller seal kit (leather seals)	58.10
20-104 (2B-20)	Little giant seal kit	401.80
30-105 (2D-30)	Little giant seal kit	401.80
40-103 (12D-40)	Little giant seal kit	401.80
40-106 (3D-40)	Little giant seal kit	POR

**“O” RING KITS FOR LITTLE GIANT SEALS, All Prices Net**

<b>Part No.</b>	<b>Nomenclature</b>	<b>Price</b>
K-20-104 (2B-20)	“O” ring kit	10.95
K-30-105 (2D-30)	“O” ring kit	11.55
K-40-103 (12D-40)	“O” ring kit	13.75
K-40-106 (3D-40)	“O” ring kit	13.75

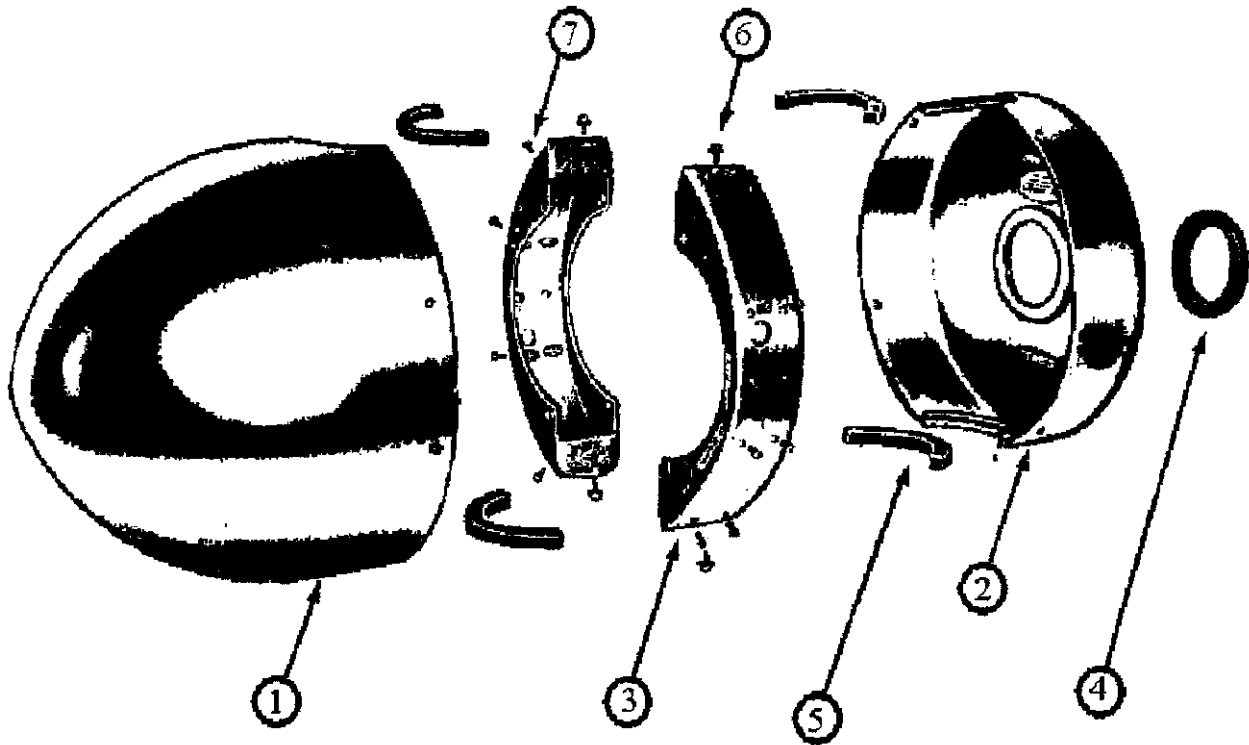
**SEAL INSTALLATION WRENCHES, All Prices Net****Combination wrenches, - L for Little Giant Seals**

AG-1087	AG-1087-L	AG-1088	AG-1088-L	AG-1089	AG-1089-L
2B-20	2B-20	2D-30	2D-30	12D-40	12D-40
\$145.70	\$145.70	\$175.75	\$175.75	\$183.05	\$183.05

**LITTLE GIANT SEAL INSTALLATION WRENCHES, All Prices Net**

T-1114 (2B-20) POR	T-1115 (2D-30) POR	T-1116 (12D-40) POR
2B-20, 2D-30 & 12D-40	Overhaul Service Manual	POR
2B-20, 2D-30 & 12D-40	Illustrated Parts Manual	POR
22D-30, 22D-40	Hydromatic Prop Maintenance Manual	POR
22D-30, 22D-40	Hydromatic Overhaul Manual	POR
22D-30, 22D-40	Hydromatic Illustrated Parts Manual	POR

# DUSTPROOF PROPELLER SPINNERS

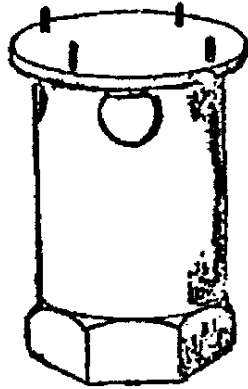


Index No.	Nomenclature	Cad Plated		
1	Nose section, 2B-20	N/A		
1	Nose section, 2D-30	N/A		
1	Nose section, 12D-40	N/A		
2	Back Plate, 2B-20	245.00		
2	Back Plate, 2D-30	261.40		
2	Back Plate, 12D-40	267.95		
3	Inside brackets, Cad. Steel, per set:	<b>2B-20</b>	<b>2D-30</b>	<b>12D-40</b>
		N/A	288.65	234.30
4	Felt – rear seal	12.95	12.95	12.95
5	Felt – split blade seal, 4 per set	27.00	27.00	27.00
6	AN502-10-16 Screw – anchor, 4 req.	1.95	1.95	1.95
7	AN502-10-6 Screw – skin, 16 req.	1.65	1.65	1.65

PROPELLER TOOLS

2B-20  
AG-1087 Reg.  
\$145.70

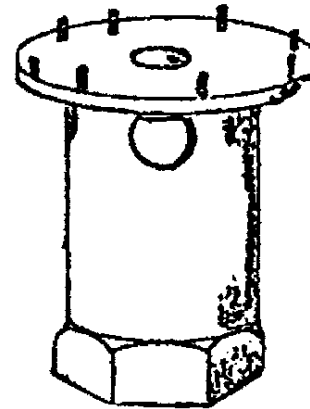
AG-1087-L  
Little Giant  
\$145.70



Wrench - Combination - Ret.  
Nut L.G. Seal 2B20

2D-30  
AG-1088 Reg.  
\$175.75

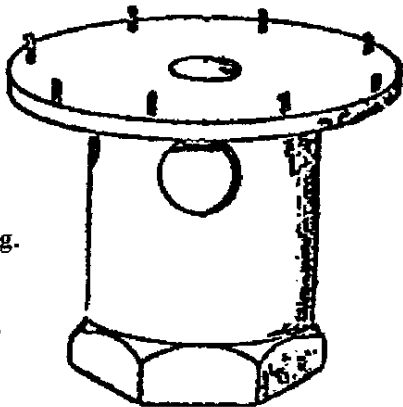
AG-1088-L  
Little Giant  
\$175.75



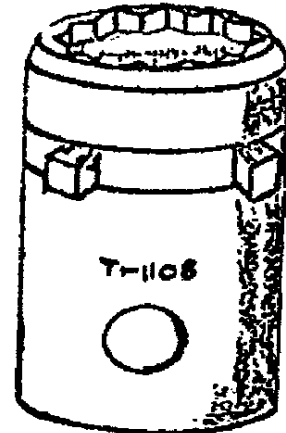
Wrench - Combination - Ret.  
Nut L.G. Seal 2D30

12D-40  
AG-1089 Reg.  
\$183.05

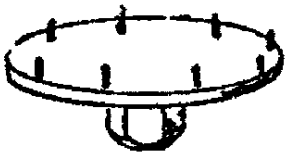
AG-1089-L  
\$183.05



Wrench - Combination - Ret.  
Nut L.G. Seal 12D40

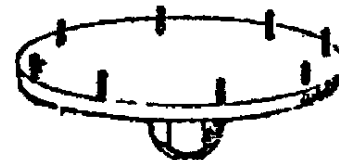


T-1108  
Wrench - Combination 3D40  
Prop. Ret. Nut  
POR



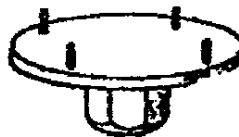
Wrench - Little Giant  
2D30  
POR

T-1115



Wrench - Little Giant  
12D40  
POR

T-1116



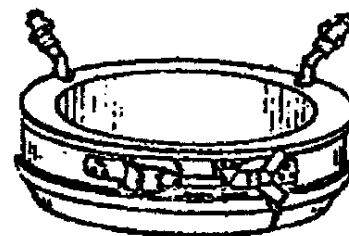
Wrench - Little Giant  
2B20  
POR

T-1114



D - Shank King Lubricator  
\$147.50/net

T-1128



B - Shank King Lubricator  
\$157.50/net

T-1129